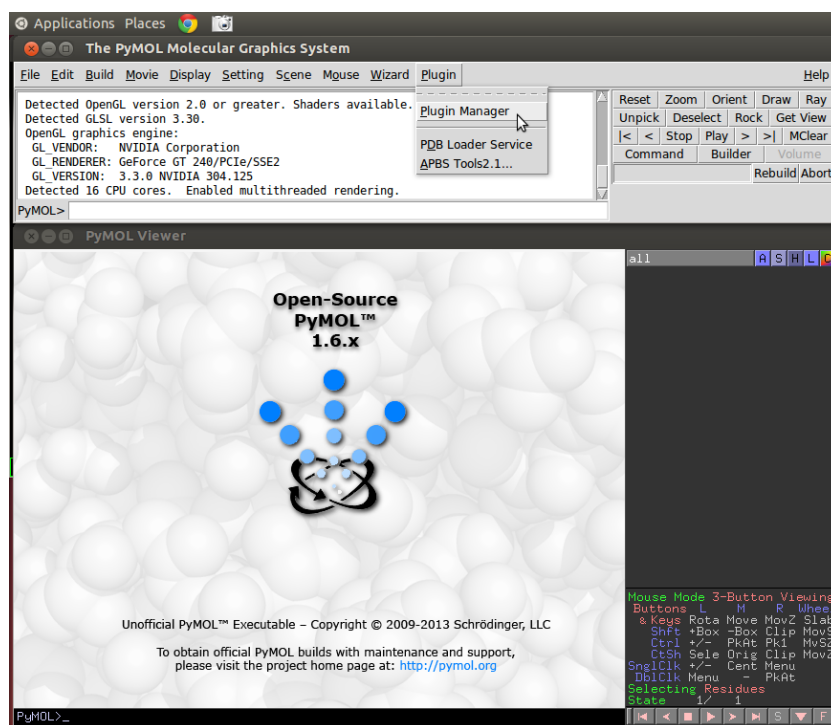


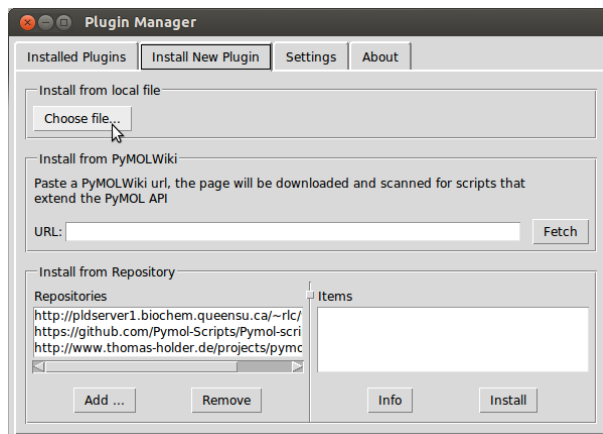
# ProBiS - PyMOL Plugin: Installation Guide

June 3, 2016

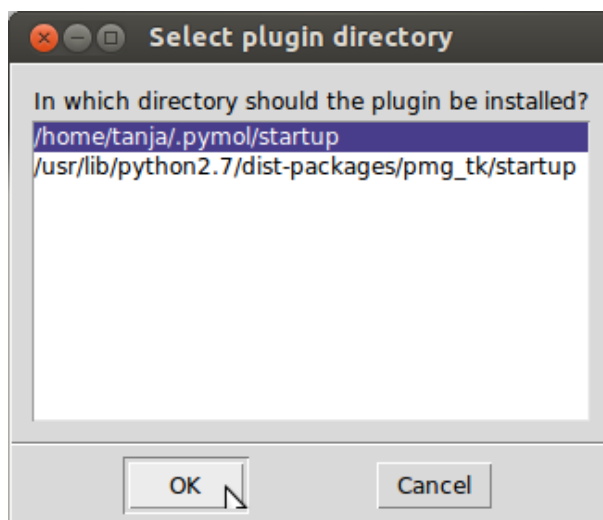
1. Download **probis.py** file.
2. Open PyMOL and go to **Plugin** → **Plugin Manager**.



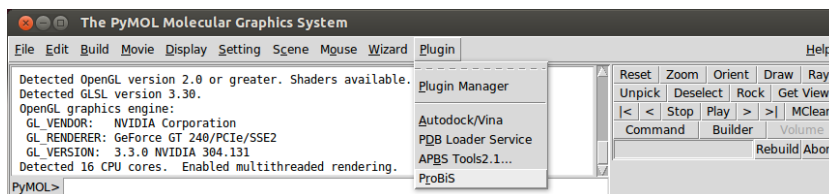
3. Select **Install New Plugin** category and click on **Choose file...** button.



4. Add **probis.py** file. In select plugin directory window select directory and click **OK**.

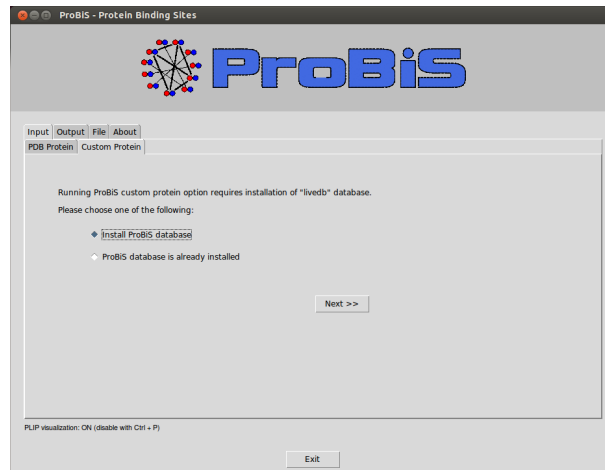


5. Close Plugin Manager window. ProBiS plugin should appear under **Plugin** → **ProBiS**.

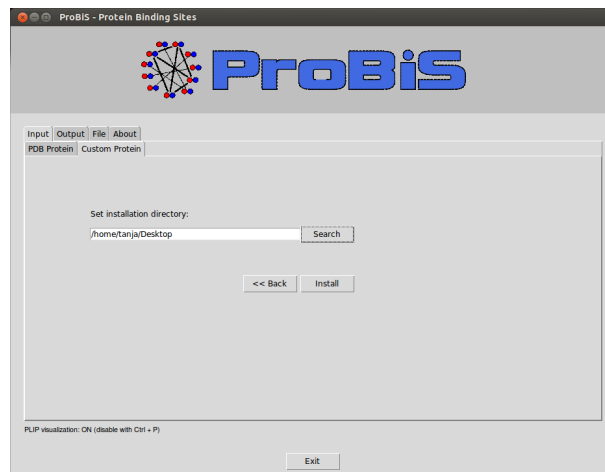


[Optional] Installation of ProBiS database:

1. To install ProBiS database (needed for custom protein calculations) click on **Custom Protein** tab. Choose **Install ProBiS database** and click **Next**.



2. Set the installation directory and click **Install**.



3. Installation of the ProBiS database should begin. When finished, a popup window will appear. Click **OK**.

